

tab M10 (HD)

A NEW TAB EXPERIENCE.

A POWERFUL TABLET THAT SUITS ALL YOUR NEEDS.

The Lenovo™ Tab M10 (HD) is one impressive family tablet. It is packed with powerful Qualcomm® Snapdragon™ quad-core 2.0 GHz and supports fast connection with true 2.4 GHz/5 GHz WiFi dual bands. Inside lies an impressive HD screen and dual front speakers for immersive entertainment – impossibly contained within an extremely thin and light profile. Plus, make it truly family-friendly by adding Kid's Pack and Stylish Folio Case so lend it to your child, worry-free. This is one tablet you'll want to pass around the house.



Lenovo™

WHY YOU SHOULD BUY THE LENOVO TAB M10 (HD)



Powerful Chip

Tab M10 HD is packed with powerful Qualcomm® Snapdragon™ quad-core 2.0 GHz, providing you with the best processing performance.



True 2.4 GHz/ 5 GHz WiFi Dual Bands

The true support of WLAN 802.11a/b/g/n/ac allows you to get fast and strong connection always.



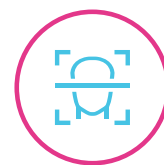
Dual Front-facing Speakers

Immerse yourself in booming surround sound. Tab M10's dual front speakers and Dolby Audio™ makes your home a true theater.



Kids Mode

Tab M10 HD puts your mind at ease with special kid's mode, which contains custom kids' content and protection. The specialized parent control and eye protection mode will allow your kid to enjoy the experience without worry.



Unlock with Face Recognition

Quick unlock your device with a flash. With face recognition technology in the front, the Tab M10 (HD) makes your device unlock convenient and quick.



WWW.LENOVO.COM

tab M10 (HD)

SPECIFICATIONS

DESIGN



Weight

480 g (1.06 lbs)

Operating System

Android Pie™



Display

Size : 10.1" HD IPS
Resolution : 1280 x 800
Display Type : LCD
Color Gamut : 70%
Brightness : 300 nits
Touch : Capacitive 10-point Multitouch



Colors

Slate Black
Polar White



Buttons and Ports

Power Key
Volume Key
microSD™/SIM Card Tray
2 x Pogo Pin
Micro USB Cable
3.5 mm Audio Jack

Camera

Rear
5 MP Auto-Focus
Front
2 MP Fixed-Focus



SIM

Type : Nano SIM
Slots : Single Slot



Sensors

Accelerometer (G) Sensor
Hall Sensor
Vibrator

PERFORMANCE

Processor

Qualcomm® Snapdragon™ 429, Quad-Core, 2.0 GHz

Audio

1 x Microphone

Speakers

2 x Front Speakers with Dolby Audio™

Memory

RAM : 2 GB / 3 GB¹
ROM : 16 GB / 32 GB
Card Slot : microSD™ Card; Up to 256 GB

Battery²

Type : Li-ion Polymer
Capacity : 4850 mAh
Browsing time : Up to 8.5 Hours
Video (720p)
Playback Time : Up to 8 Hours



CONNECTIVITY

Bands Supported

ROW SKU
GSM : B2/B3/B5/B8
WCDMA : B1/B2/B5(B6/B19)/B8
FDD LTE : B1/B2/B3/B4/B5(B19)/B7/B8/B20
TDD LTE : B38/B40

PRC SKU

GSM : B2/B3/B5/B8
WCDMA : B1/B2/B5/B8
TD-SCDMA : B34/B39
FDD LTE : B1/B3/B5/B7/B8
TDD LTE : B34/B38/B39/B40/
B41(2545-2655 MHz)

Wireless Connectivity

WLAN : 802.11 a/b/g/n/ac, 2.4 GHz & 5 GHz
Bluetooth* : Bluetooth® 4.2
WiFi Direct : Yes
WiFi Display : Yes
GPS : Yes
Glonass : Yes
Beidou : Yes
A-GPS : Yes
FM Radio : Yes



APPLICATIONS

- Camera
- FM Radio
- Netflix
- Recorder
- Calculator
- Kid's Mode
- Clock
- Google
- Google Messages
- Google FilesGo
- Google Phone
- Contacts
- Gmail
- Google Chrome
- Google Photos
- Google Play Music
- Google Play Movies & TV
- Google Duo
- Google Calendar
- Gboard
- Skype™
- Outlook
- Dolby Audio™

¹ Technical ready.

² May vary by usage.

WHAT'S IN THE BOX

- Tab M10
- Travel Adapter (5V/2A)
- Micro USB Cable
- Quick-Start Guide
- Warranty
- Safety Guide
- SIM Pin



WANT MORE?

Tab P10, Tab E10, Tab E8, Tab E7

ACCESSORIES

- Kid's case + film
- Bumper case + film
- Folio case + film

RECOMMENDED LENOVO SERVICES

Warranty Extensions (1-to-3 Years Total Duration)* The fixed-term, fixed-cost service helps accurately budget for PC expense, protect your valuable investment and potentially lower the cost of ownership.

Accidental Damage Protection* Avoid the hassles of unexpected repair costs. Provides coverage for non-warranted damage incurred under normal operating conditions, such as minor spills, drops or damage to the integrated screen.

* Not available in all countries.



WWW.LENOVO.COM



Lenovo reserves the right to alter product offerings and specifications at any time, without notice. Lenovo makes every effort to ensure accuracy of all information but is not liable or responsible for any editorial, photographic or typographic errors. All images are for illustration purposes only. For full Lenovo product, service and warranty specifications visit www.lenovo.com. Lenovo makes no representations or warranties regarding third party products or services. **Trademarks:** The following are trademarks or registered trademarks of Lenovo: Lenovo, the Lenovo logo, Yoga, Google and the Google logo are trademarks of Google Inc. Android is a trademark of Google Inc. Ultrabook, Celeron, Celeron Inside, Core Inside, Intel, Intel Logo, Intel Atom, Intel Atom Inside, Intel Core, Intel Inside, Intel Inside Logo, Intel vPro, Itanium, Itanium Inside, Pentium, Pentium Inside, vPro Inside, Xeon, Xeon Phi and Xeon Inside are trademarks of Intel Corporation in the U.S. and/or other countries. Other company, product and service names may be trademarks or service marks of others. Battery life (and recharge times) will vary based on many factors including system settings and usage. ©2019 Lenovo. All rights reserved.

Lenovo™